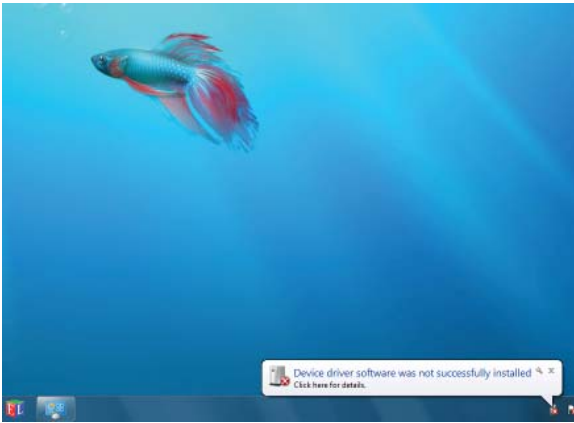


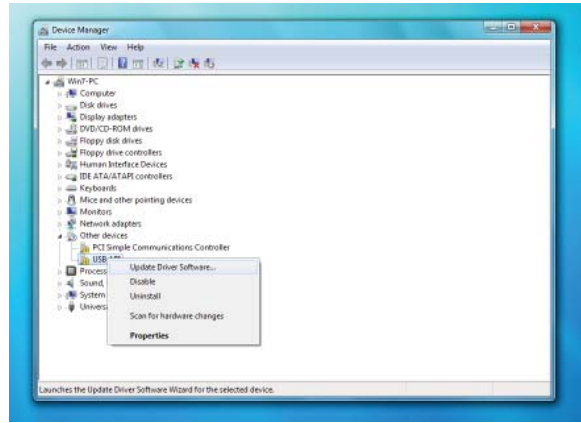
# EasyLog Driver Install for Windows 7 (32-bit version only)

1.



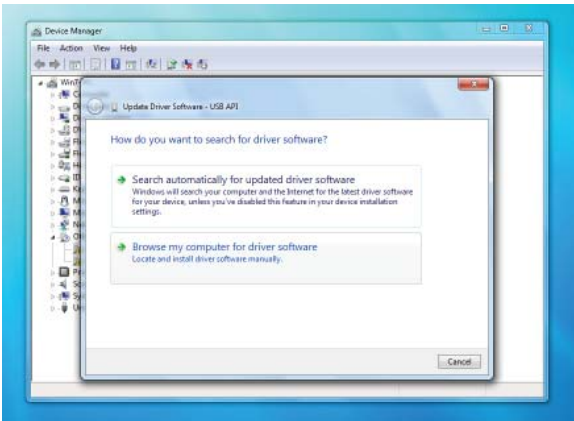
When an EasyLog data logger is first connected Windows 7 will unsuccessfully attempt to install drivers.

2.



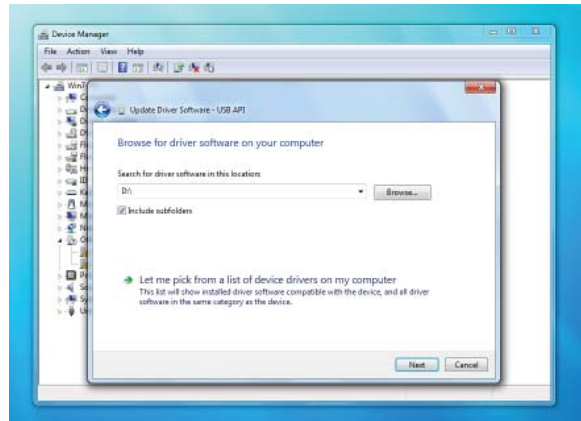
With the EasyLog data logger still connected open 'Device Manager' (Control Panel > System & Security > System OR 'Windows' key and 'Pause/Break'). You will see an entry named 'USB API' within 'Other Devices'. Right-click on this and select 'Update Driver Software'.

3.



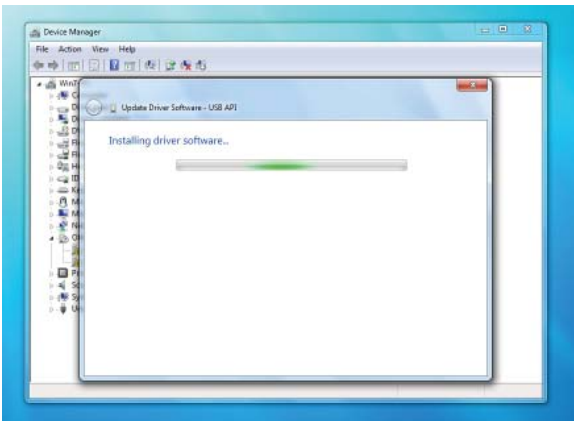
Within the 'Update Driver Software' wizard, select 'Browse my computer for driver software'.

4.



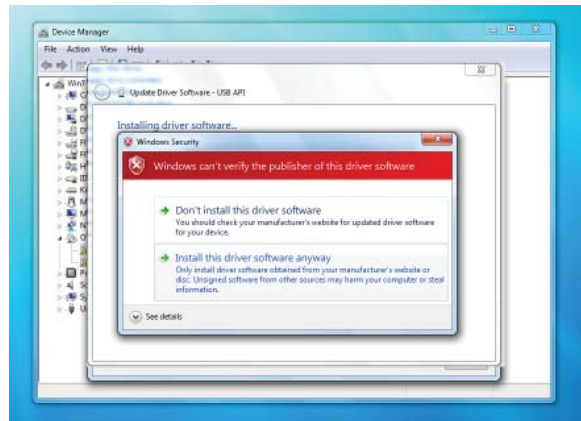
The drivers are included on the mini-CD supplied with your EasyLog data logger. Click 'Browse' and select the CD/DVD drive that the EasyLog software CD is located in. Then click 'Next'.

5.



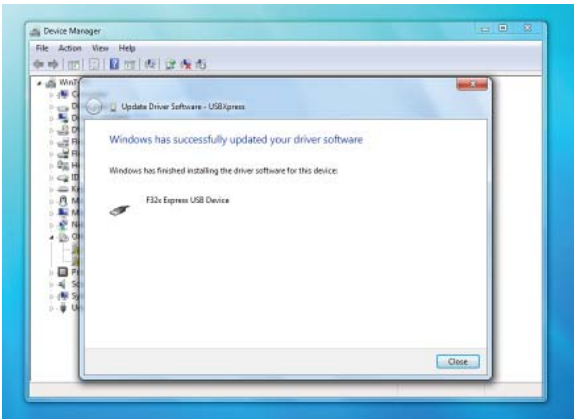
The 'Update Driver Software' wizard will now search the CD for the appropriate drivers.

6.



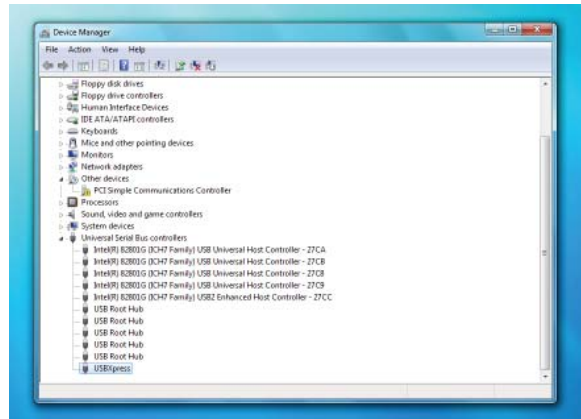
At this 'Windows Security' message click 'Install this driver software anyway'. This will not harm your PC. Then click 'Next'.

7.



The driver has been successfully installed. Click 'Close' to exit the 'Update Driver Software' wizard.

8.



The driver should now appear as 'USBXpress' within the 'Universal Serial Bus controllers' section of the 'Device Manager'.