

VFC400

Data Logger Configuration

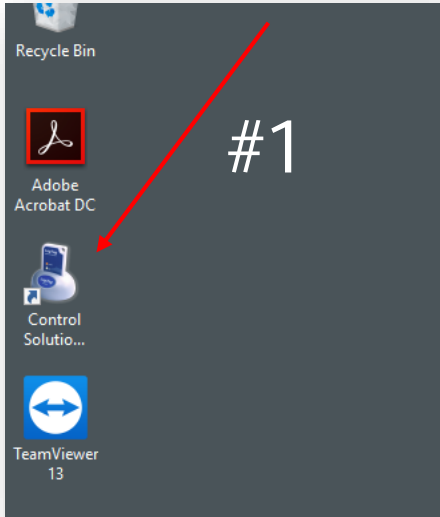


Programming your settings



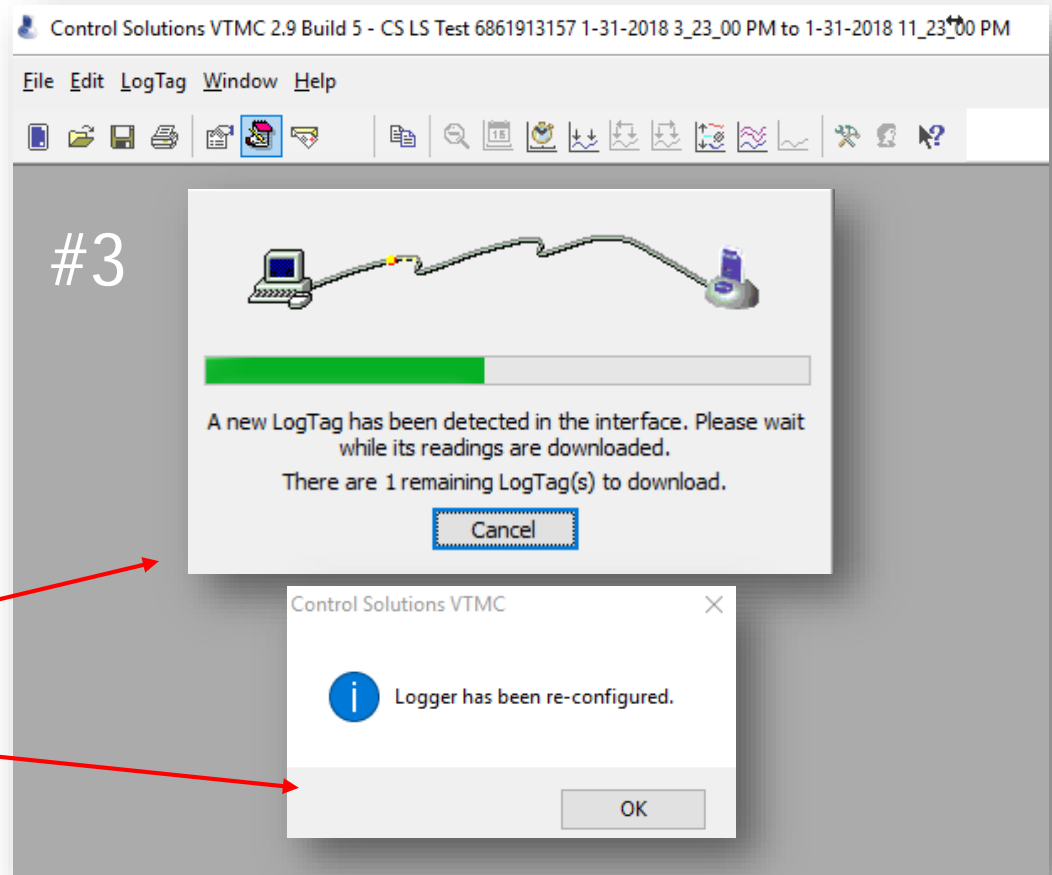
Open Control Solutions VTMC

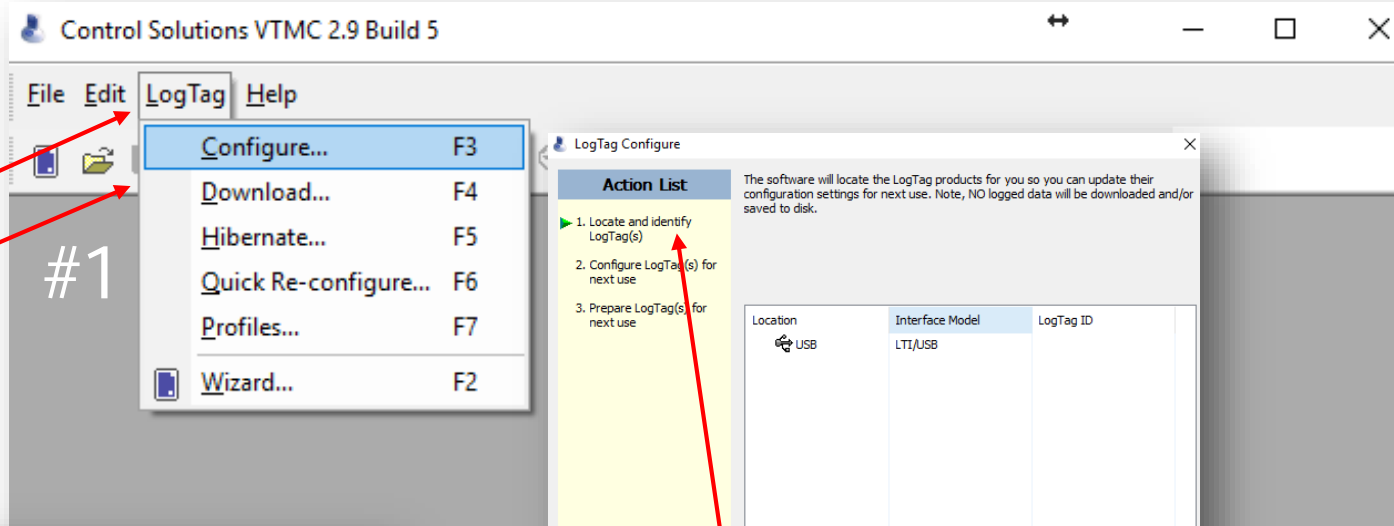
by clicking on the icon on your desktop



Plug the docking station into the USB port of your computer then place the data logger *firmly* into the docking station

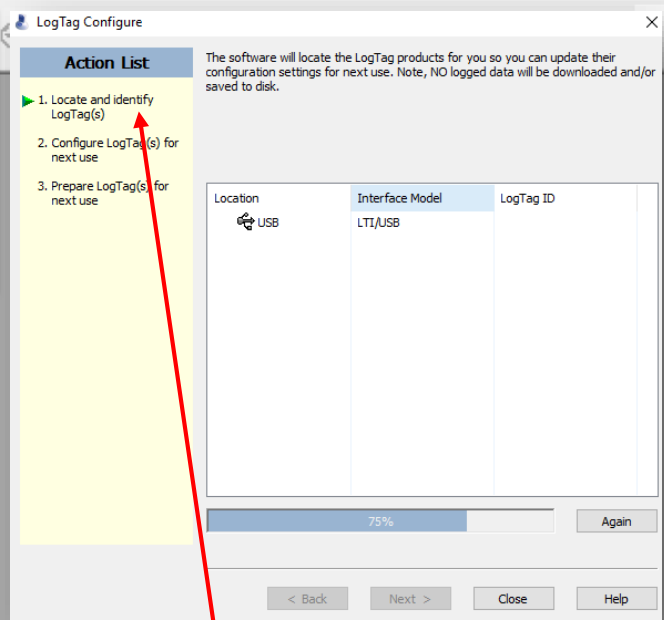
Once the logger is placed in the docking station you will see two windows: the first will tell you the logger has been detected, the second will tell you the logger has been re-configured. Click OK





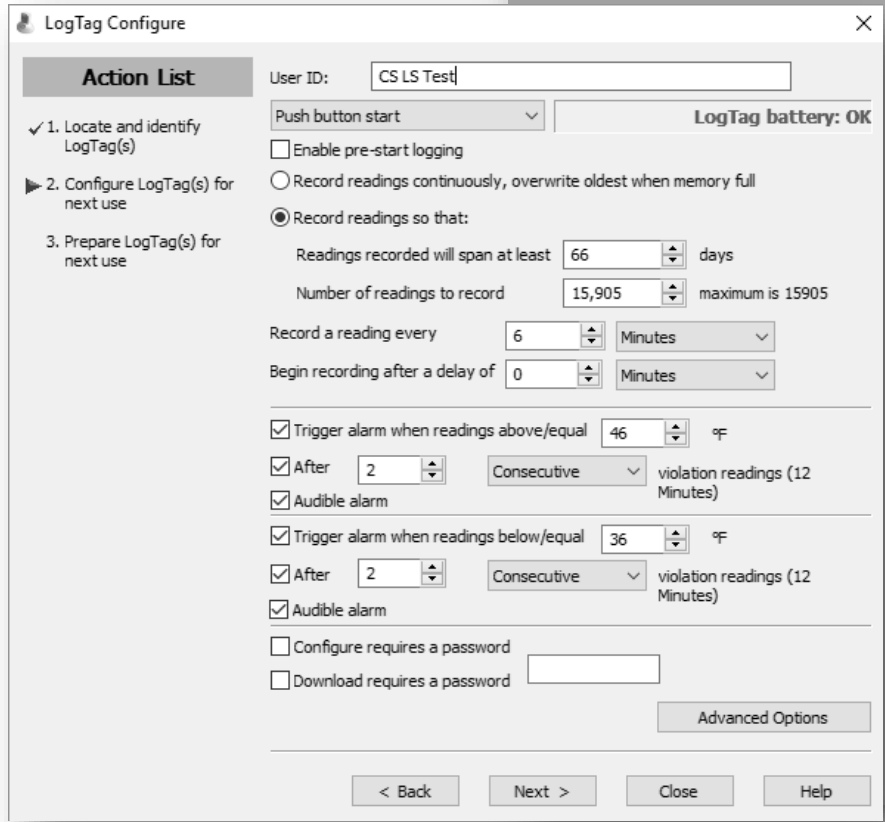
Now choose LogTag then Configure

#1



#2

After choosing Configure the software will locate and identify your logger.



#3

Once identified the Configuration settings window will appear. Here you will enter your desired settings.



Check the button next to "Record Readings So That".

#1

#2 Skip to "Record a Reading Every" and change it to your state's recommendation; typically between 6-30 minutes. Change the drop down to "Minutes".

LogTag Configure

User ID:

Push button start

Enable pre-start logging

Record readings continuously, overwrite oldest when memory full

Record readings so that:

Readings recorded will span at least days

Number of readings to record maximum is 15905

Record a reading every

Begin recording after a delay of

Trigger alarm when readings above/equal °F

After violation readings (12 Minutes)

Audible alarm

Trigger alarm when readings below/equal °F

After violation readings (12 Minutes)

Audible alarm

Configure requires a password

Download requires a password

Check these 6 boxes and configure your alarms with the appropriate temperatures for a fridge or freezer.

#3

#4

The VFC400 can be set up with a delay for the high and low alarm.

In this example, we set the alarms for 2 consecutive samples-30 minutes.

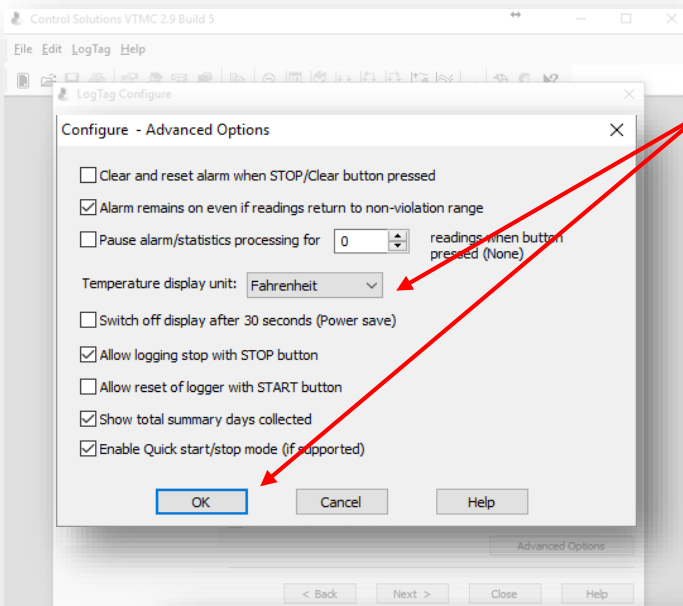
Check with your state VFC program to see if they allow a delay for the high/low alarms.

#5

After completing steps 1-4 click the Advanced Options button here. Advanced options instructions on next page.

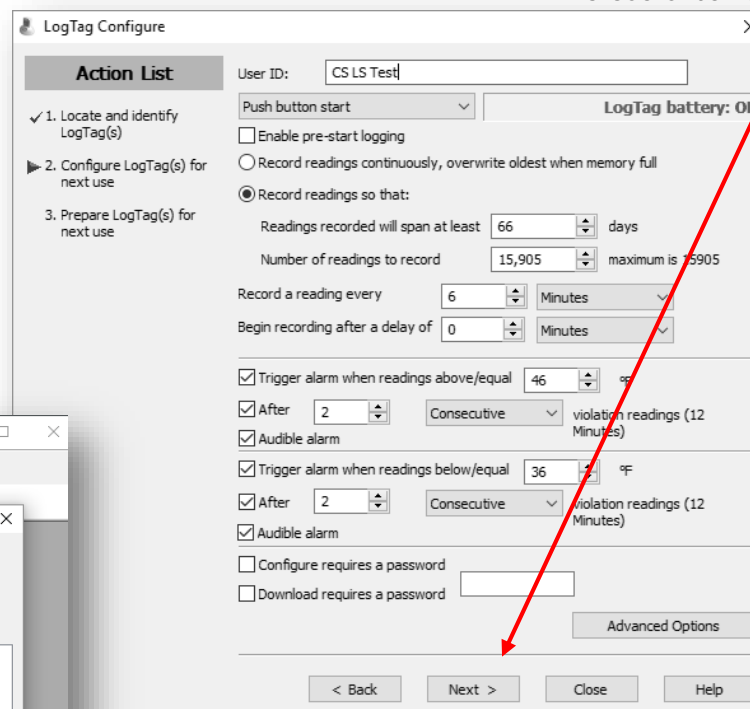
CDC Recommended temperature ranges:
Refrigerator: 36° to 46°F (2° to 8°C)
Freezer: -40° to 5°F (-40° to -15°C)



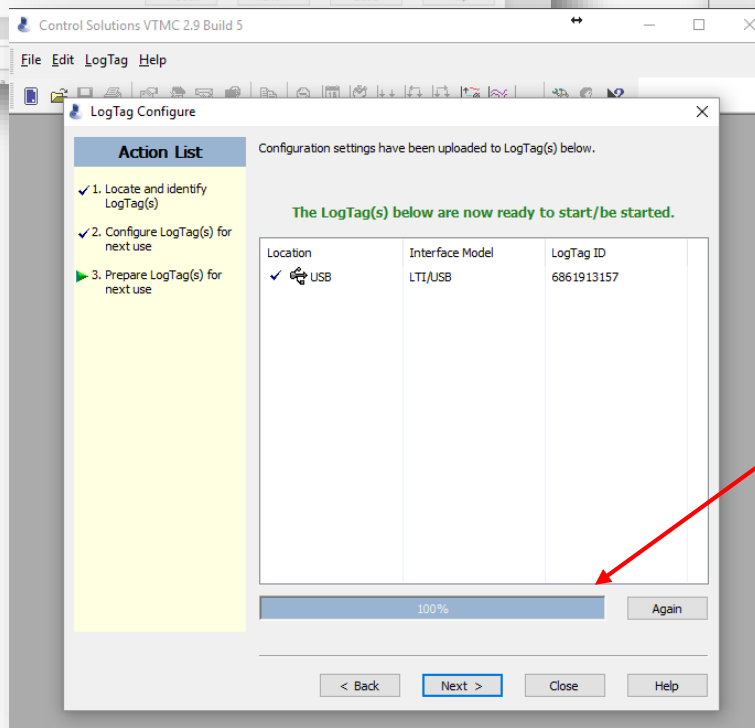


Choose the temperature scale you would like displayed on the data logger; Fahrenheit or Celsius. Select OK.

The Advanced Options menu will close after clicking OK.



Click the Next button to complete the configuration of the data logger.



Once the status bar reaches 100% the data logger can be removed from the docking station and you can close the configuration window.



Questions about software download?

Visit our [support page](#)

Send us an email
support@vfcdataloggers.com

Jump to:

[VFC400 Installation](#)

[VFC400 Software Download](#)

[VFC400 Software Set Up](#)

[VFC400 Logger Configuration](#)

[Data Logger Operation](#)

